

Illinois Poets

News of the Illinois State Poetry Society

September - October 2022

ISPS Board Members

Susan T. Moss
President

Mary Beth Bretzlauf
Vice President

Thomas Chockley
Secretary

Judith Tullis
Treasurer

Mike Freveletti
Historian and
Wm Shakespeare

Sheila Kirscher
At-Large Board
Member

Alan Harris
At-Large Board
Member
Webmaster

Jennifer Dotson
Newsletter Editor

Chapter Facilitators

Carbondale - Southern
Kathy Cotton

Champaign - Central
Jim O'Brien

Darien - W. Suburban
Caroline Johnson

**Haiku chapter (meets in
Northbrook)**
Tom Chockley

Lisle - SW Suburban
Wilda Morris

Northbrook - N. Suburban
Mary Beth Bretzlauf

Pontiac - N. Central
Kathleen Murphy

President's Message



The editing of ISPS poets' work for *Distilled Lives vol. 6* anthology is nearing completion and will next be formatted and readied for publication. The process takes time and planning which will ultimately result in a collection of sixty-one members' poems.

In September we can concentrate on submitting poems for our annual contest. The entry timeline is from September 1 to October 31, 2022. Our website has all the printable information including guidelines. Contact Mary Beth Bretzlauf at ISPS.manningham@gmail.com with any questions.

Another event is the September 24 workshop presented by Charlotte Digregorio. The program will focus on haiku and senryu with handouts sent in advance to those who register. More information will be forthcoming about the 2-4 p.m. Zoom.

With so many sources to read poetry and submit it as well, we often find ourselves thinking about why we write it and what does it offer us when we read it. The answers are many and varied. Words, when assembled on a page, can tell a story of yearning, childhood, observations, and many other concerns and delights. It's our need to find answers or perhaps guide others, share hopes or fears that lead to a condensed creation. Our poetry can serve as a diary of our personal lives with the poems relating some event or phase as time goes on. It also holds its own energy which we give back to ourselves and others. Whether it's a poem that urges "Hold fast to dreams" as Langston Hughes wrote or lines from Louise Gluck: "Language was filling my head, wild exhilaration/alternated with profound despair," we cradle humanity in our words and attempt to make sense of our lives.

Happy writing,

Susan T. Moss

In Memoriam...

Kathleen Robinson's professional career included technical writing for many groups in Champaign-Urbana in addition to Brookhaven National Lab in Long Island, N.Y. Her interests included books; decorative arts; classes at Olli, including the poetry writers' group; and the Illinois State Poetry Society. She was a proficient gardener at her Green Street home and a member of the Illinois Prairie Hosta Society.



Kathy Robinson took up poetry after retiring as a long-time wordsmith (technical and scientific editing, mostly). She was active in state and national poets' organizations and cherished the connections between the lovers of images made real through crafted word play.

Kathy joined the Champaign/Urbana Poetry Group in 2015 and shared many wonderful and amazing poems with the group over the years. Her feedback on other poems was always kind, constructive, and insightful. Kathy was instrumental in establishing the Central Chapter of the Illinois State Poetry Society in Champaign. She facilitated it from its inception in 2017 until her illness prevented her from doing so and she will be dearly missed. She passed away in early July.

Some Roots Run Far

by Kathy Robinson

Digging up
a scrappy patch of ground to
plant more flowers, I come upon a
root where none should be, I think at first:
The nearest tree is half a lawn away—
my neighbor's shade.
It liberally
shakes off
twigs
and minor branches at all times of year and
drops annoying seed balls three months out of
four.

Those trip
unwary walkers—canines'
cool companions, who are careful
not to flick their cigarette butts
on our yards,
the path,
the curb,
when anyone is present, yet careful too
to always carry off the droppings of their dogs—
I've no complaint on that account.

They pause
along this stretch of sidewalk for
their dogs to finish, and to admire my work
even when
I am
not here.

Now I pause
in my task, considering the root,
then repack soil around it and
scatter
my seeds
of reconciliation.
I'm sure they'll grow just fine.

March

Gray. Rain. Gray. Rain
Plenty of both.
It is called Spring, I guess.

But Thursday, a gray morning,
at the gravel edge of a parking lot
sheltered against an old building,

a row of daffodils,
each yellow flower
bent in prayer
giving thanks.

*(Note: This poem was printed on the
program of her Celebration of Life
gathering.)*



Carol Dooley,
Carbondale,
IL 12/11/44 –
4/15/22

Carol, a long-time, faithful member of Southern Chapter, was both a poet and an accomplished artist. Her poetry was published in each of the chapter's four books and appeared in its numerous public and online exhibits. Her family noted that she left behind thousands of poems and paintings.

ISPS Chapter News

ISPS West Suburban (Darien) Chapter - The Darien ISPS critiquing group will meet **Saturday, September 3, from 1 - 4 p.m.** at the Indian Prairie Library's 2nd floor Board Room, 401 Plainfield Road, Darien. Bring 8 - 10 copies of up to 2 poems to share for critique. Also bring a food item to share, and a beverage for yourself. Also bring a mask in case they are required. <https://ippl.info> Caroline Johnson, Facilitator, twinkscat@aol.com Driving directions can be obtained on MapQuest.com, or by calling the library at **630-887-8760**.

ISPS-Haiku Society of America Haiku Chapter will meet **Sunday, October 16, 2022, 1 pm to 3 pm using Zoom**. If you would like to attend, please RSVP to Tom Chockley at tomzhaiku@outlook.com by Tuesday, October 11. To those who RSVP, Tom sends the meeting agenda and further information when he receives your reservation. ISPS and HSA haiku enthusiasts are invited to attend. We ask that those who wish to workshop their haiku for feedback, please limit the number to one haiku per participant. The deadline for RSVPs to attend will be Tuesday, August 16. Contact Tom Chockley (tomzhaiku@outlook.com) to attend the Zoom meeting and to receive further information.

ISPS Northern Chapter holds its next meeting on **Sunday, September 11, 2022 at 1 p.m.** via Zoom. If you would like to submit a poem for critique, you may do so before September 10th. Questions or to receive the link, email Chapter facilitator Mary Beth Bretzlauf, mbbretzlauf@comcast.net.

ISPS Champaign – Central Chapter (Champaign) will hold its next meeting on **Sunday, September 4, 2022, at 12:00 noon CT** on Zoom. Jim O'Brien is the Chapter's new facilitator. To RSVP and if you wish to have a poem or two critiqued, please submit them to him via email - journaljim@gmail.com - no later than Saturday night. Jim will forward the link and the poems early Sunday morning. As brief introduction to the new facilitator, Jim O'Brien publishes under the name James Escher. His poems have most recently appeared in *Pegasus*, *Bear River Review*, *Pilcrow & Dagger*, and *The Tishman Review*. He lives and writes in East-Central Illinois, where he is the co-founder of the Champaign- Urbana Poetry Group, a weekly poetry workshop.

ISPS North Central Chapter (Pontiac) will meet on **Saturday, October 10, 2022 at 10:00 am** via Zoom. Kathleen Murphy is the facilitator and she explains how their meetings works: "at our meetings, we pick a theme for the next meeting, based on the month. For example, the theme for April was spring and the theme for June was family, because of Father's Day. Then, sometime before the meeting, I send a picture representing the theme, and we all write poems based on the theme and the picture. We can interpret the theme and the picture any way we like, and put any spin on our poems that we want. We read them all at the current meeting, and then we pick a different theme for the next meeting. Our theme for August is back to school, and I have an old picture of a building at my college that I'm going to send. For June's family theme, I sent a picture of a Roma family, and some of the poems, including mine, were more about the Roma people than family. But we don't mind! I hope this is helpful and of some interest. Thanks!" For the October meeting's theme and picture, contact Kathy for kathleenzmurphy@mail.com.

ISPS Southern Chapter's meeting date is moved to **1:30 p.m., Sunday, September 18** (instead of our regular schedule, September 11) due to library conference room use. The Meeting is held at the at the Carbondale Library, 405 West Main, Carbondale, IL 62901. [\[https://www.carbondale.lib.il.us\]](https://www.carbondale.lib.il.us). Kathy Cotton, Facilitator, sipoets7@gmail.com. Please bring 10-12 copies of your poem for critiquing. Driving directions can be obtained on MapQuest.com, or by calling the library at **(618) 457-0354**.

ISPS Southwest Suburban Chapter (Lisle) will hold their next meeting on **Sunday, October 2, 2022, 1 p.m.** via Zoom. You may submit up to three poems (or three pages) for critique to wildamorris[at]ameritech[dot]net. Please, if possible put your poems in one document, with each poem beginning on a separate page, with your name in the upper right-hand corner of each page. Poems should be submitted by Friday, September 30.



POETRY CONTEST

29th ANNUAL CONTEST • 2022 • www.illinoispoets.org**1. ISPS Board Award**

Sponsored by ISPS Board of Directors

- SUBJECT: The New Normal
- FORM: Any
- PRIZES: \$75, \$55, \$35

2. Wedding Anniversary Gift Award

Sponsored by Ida Kotyuk

- SUBJECT: Traditional anniversary-year gift (paper, silver, etc.) as metaphor/simile for the marriage
- FORM: Any
- PRIZES: \$75, \$50, \$25

3. Animal Thoughts Award

Sponsored by Jill and Aaron Langlois in memory of Dolores Langlois

- SUBJECT: Animals
- FORM: Any
- PRIZES: \$60, \$40, \$20

4. Kathy Cotton Award

Sponsored by Judith Tullis to honor Kathy Cotton for years of artistic & poetic support

- SUBJECT: My Secret Garden
- FORM: Any
- PRIZES: \$60, \$40, \$20

5. Southern Chapter Award

Sponsored by ISPS Southern Chapter, Carbondale IL

- SUBJECT: Possessions
- FORM: Any
- PRIZES: \$50, \$30, \$15

6. Free Verse Award

Sponsored by ISPS

- SUBJECT: Any
- FORM: Free Verse
- PRIZES: \$50, \$30, \$15

7. Formal Verse Award

Sponsored by ISPS

- SUBJECT: Any
- FORM: Any set form (Identify the form at the top of the submission)
- PRIZES: \$50, \$30, \$15

8. Traditional Haiku (5-7-5) Award

Sponsored by ISPS

- SUBJECT: Any
- FORM: Traditional 5-7-5 haiku
- PRIZES: \$50, \$30, \$15

9. Modern Haiku Award

Sponsored by ISPS

- SUBJECT: Any
- FORM: Modern haiku
- PRIZES: \$50, \$30, \$15

10. Summertime Award

Sponsored by Nancy LaChance

- SUBJECT: In the Good Old Summertime
- FORM: Any
- LINE LIMIT: 24
- PRIZES: \$25, \$20, \$10

11. Highland Park Poetry Award

Sponsored by Highland Park Poetry

- SUBJECT: Any
- FORM: : Tricube (3 stanzas of 3 lines with 3 syllables each)
- PRIZES: \$25, \$15, \$10

12. Compassion Award

Sponsored by Curt Vevang

- SUBJECT: Compassion
- FORM: Any
- PRIZES: \$25, \$15, \$10

SUBMISSION GUIDELINES

1. **Eligibility.** Contest is open to anyone.
2. **Original, unpublished work.** Not in print or published electronically.
3. **Previous Awards.** Poems which have won monetary awards are not eligible.
4. **Poem format**
 - In English.
 - Typed or computer-generated, 12 or 14 point; no fancy fonts or illustrations.
 - 40-line limit, unless specified.
 - One single-spaced poem per 8.5" x 11" page.
5. **Titles.** Except haiku, title all poems. Title and one following blank line are not included in the line count.
6. **Poems.** No poem may be submitted in more than one category.
7. **Simultaneous Awards.** No poet will win two awards in the same category.

8. Submit two copies of each poem:

Originals. In the upper left-hand corner include: Number and name of contest; your name, address, e-mail, and phone number; the word "MEMBER" if you have current membership in ISPS.

Duplicates. In the upper left-hand corner include ONLY number and name of contest.

Two Stacks. Separate originals from duplicates and stack in numerical order with originals on top.

Entry Fees

- **ISPS Members:** \$8 for up to 8 poems, \$1 each additional poem.
- **NON-ISPS MEMBERS,** \$10 for up to 8 poems, \$1 each additional poem.

SUBMISSION PERIOD

Submissions must be postmarked:

September 1 to October 31, 2022**SUBMISSION MAILING**

Mail submissions with check, payable to Illinois State Poetry Society to:

**ISPS c/o Mary Beth Bretzlauf
426 Park Avenue
Highland Park, IL 60035**

For a copy of the winners' list by mail, include a stamped, self-addressed envelope with your submission.

QUESTIONS?

Contact the contest chair:

**Mary Beth Bretzlauf
ISPS.manningham@gmail.com**

JOIN US or VISIT US...

For information on how to join ISPS or to see this year's list of 1st, 2nd, 3rd and three honorable mention awards in each category, visit our website:

www.illinoispoets.org

6.23.22 kac

Welcome New Members



Pauline Kochanski is an exhibiting artist, writer, teacher and meditator, with a new found love of poetry. And as of now poetry has become integral to her writing Pauline Kochanski an exhibiting artist, writer, meditator, teacher and student (the order changes daily) with a new found love of poetry. Drawing and writing and poetry are the core of my daily practice. And one day I would like to play the Ukulele.

Kara Puckett, a new member of the ISPS Lisle Chapter, is a lifelong resident of Illinois who has started her senior year of high school. Last year, her poem "Hands" won fifth place in the Manningham Trust Poetry Competition at the national level. Kara's awards also include: 3rd place for her dramatic scene "Deep Spaces" in this year's Dukane Literary Festival and 3rd place in short fiction at last year's Dukane Literary Festival for her short story "Amber." Her current projects also include a choose your own adventure story and the screenplay for a TV show.



G. Jordan Maclay has had a lifelong curiosity in understanding the fundamental behavior of people, including himself, as well as the fundamental behavior of the physical world. His interest in self-exploration led to a study of psychology, philosophy, spirituality, and art. He is a quantum physicist by training, PhD from Yale, an emeritus professor from UIC. He sees art and poetry as an expression of the joyous mysteries of life. He is a new member of the ISPS Lisle Chapter. More at gjordanmaclay.com

Hana Ferguson is a full-time English and History student at Rockford University. Hana works part time as a teen librarian as well as part-time at an antique mall. Hana is also a part of the Rockford Writers Guild and a board member. Hana reads, writes and paints in her free time and likes to spend time with her partner and twin brother. Hana plans to get her Master's and has one year left at Rockford University to receive her bachelor's degree. She joined the Haiku Chapter.



ISPS MEMBER EXCLUSIVE - Haiku & Senryu Workshop: Capture Your Life's Moments

Haiku and senryu are among the most misunderstood poetic forms by not only the public, but by accomplished poets of other forms. Haiku focuses on nature, but senryu, written in the haiku form, focuses on human nature and people's weaknesses/struggles. This comprehensive workshop on how to write and publish these enjoyable, insightful, moving, and healing short poems will be **Saturday, September 24**, from **2 to 4 p.m.**, (CT via Zoom), led by ISPS Member **Charlotte Digregorio**. We'll debunk misconceptions about haiku/senryu that originated centuries ago in Japan, now written in dozens of languages worldwide. Learn about traditional vs. modern haiku/senryu. There will be a short writing exercise with time allowed for volunteers to read one poem.

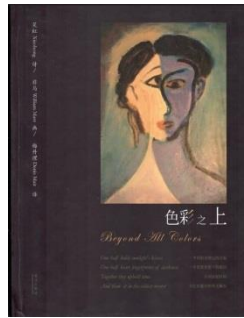
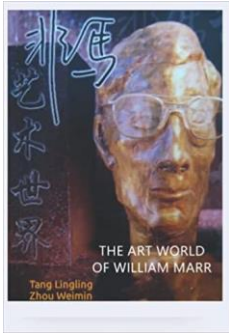


Digregorio, author of *Haiku and Senryu: A Simple Guide for All*, served as an executive officer of the Haiku Society of America for several years; is a keynote speaker on haiku throughout the U.S.; and manages "The Daily Haiku" by global poets on her blog, www.charlottedigregorio.wordpress.com. Please note: Digregorio gives haiku/senryu workshops each month for writer's groups, but each is different with fresh material including new samples of poems to analyze and discuss. Each

participant will be emailed handouts prior to the workshop to bring to it. (*We won't screen-share the handouts.*) **Registration Deadline:** Email c-books@hotmail.com, by 5 p.m., **Tuesday, September 20**. You'll be sent a Zoom link a day or two in advance of the workshop.

ISPS Member News

Mark Hammerschick reports that his poem "Toddler on Fire" won Third Prize in the Sad Girls Club <https://sadgirlsclub.org/> Summer 2022 Poetry Contest. His poem "Eagle" won an Honorable Mention in the Florida State Poets Association <https://www.floridastatepoetsassociation.org/> 2022 Contest.



William Marr has had two new books published in 2022: *The Art World of William Marr* (Chinese/English) published by Washington Writers Press, 2022 (<https://www.amazon.com/dp/B09PHC1D72>); *Beyond Time and Space* (in Chinese), The 5th volume of William Marr's Self-selected Poetry Anthology published by Showwei Information Company, Taiwan, 2022. Also, not previously

mentioned, is *Beyond All Colors*, Poems by Xiaohong, Paintings by William Marr, Translations by Denis Mai and Published by I WING PRESS, 2021

Chicagoland Poets & Patrons is hosting a "Write! Chicago" event on **Saturday, October 8**, at the Field Museum to explore their new exhibit honoring indigenous cultures and find inspiration for poetry. The group will meet at 11:00 a.m. near the museum's entrance. Interested persons should visit www.poetsandpatrons.net/ or contact Caroline Johnson, carolinejohnson.author@gmail.com.

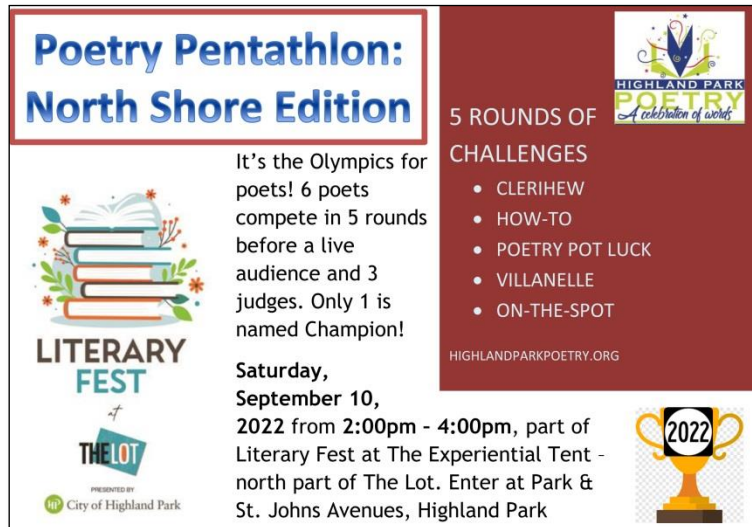
Another Fine Poetry Reading Coming Up September 25 - ISPS and Brewed Awakening offer a diverse poetry reading on Sunday, September 25. **John Gordon**, a long-time ISPS member and frequent open-mic participant at Brewed Awakening will appear along with **Hana Ferguson**, a young, up-and-coming poet. You may listen or participate by going to Brewed Awakening (19 W Quincy Street, Westmont, IL, just off Cass Avenue, across the street from the train station), or by joining us on Zoom. At the coffee shop, here is a \$12 cover charge, which entitles you to a beverage and snack (They are known for their fresh-baked muffins). Or you may listen to the featured poets and read your own poem on Zoom.

John will appear in person; Hana will probably appear via Zoom. Purchase your ticket for \$5 via the ISPS website or the event announcement on Facebook once the link is available. You won't want to miss this. **John J. Gordon** developed his interest in poetry later in life. He began writing poem for family and friends to commemorate special occasions. Poetry classes, workshops and group memberships followed. He is currently a member of ISPS, Poets & Patrons and the Arbor Hill Gang. Among many topics, he writes about family, travel, music and social conditions, using free verse and rhymes. He appreciates accessible poetry where extensive explanations are not required. His poems are published in anthologies, reviews, journals and online.

Hana Ferguson is a full-time Rockford University student majoring in English and history and has one year before receiving her bachelor's degree. Hana works part-time at a local library and part-time at an antique shop, and serves as the recording secretary of the Rockford Writers' Guild. In her (little) free time, Hana likes to read, write, paint, and spend time with her fiancé and brother. Watch our website at www.illinoispoets.org for announcements concerning the readings on the last Sunday of October and the last Sunday of November. We expect that one of the featured poets in October will be Maureen Tolman Flannery.

More ISPS Member News

Highland Park Poetry is seeking unpublished manuscripts for The **Prairie State Poetry Prize for a 1st or 2nd Book**. Prize is \$150, publication of the manuscript, 20 copies, and a featured reader spot for HPP. Deadline for submissions is October 31st and Chicago poet Cynthia Gallaher in the final judge.



**Poetry Pentathlon:
North Shore Edition**

It's the Olympics for poets! 6 poets compete in 5 rounds before a live audience and 3 judges. Only 1 is named Champion!

LITERARY FEST
at
THE LOT
PRESENTED BY
City of Highland Park

5 ROUNDS OF CHALLENGES

- CLERIHEW
- HOW-TO
- POETRY POT LUCK
- VILLANELLE
- ON-THE-SPOT

HIGHLANDPARKPOETRY.ORG

2022

Highland Park Poetry logo: **HIGHLAND PARK POETRY** A celebration of words

Highland Park Poetry also offers monthly in-person poetry readings and open-mics at Madame ZuZu's, 1876 First Street, Highland Park, Illinois. All events at Saturdays at 5PM. Poets may read up to 3 poems in the open-mic. There is no cover charge but attendees are expected to purchase an item from the café. The upcoming line up includes ISPS members as featured poets:

September 10 – **Susan T. Moss**, *Mapping a Life* and **Kate Hutchinson**, *A Matter of Dark Matter*

October 8 – **Spotlight on Local Youth Poets**

For more details, please visit www.HighlandParkPoetry.org.

Procedure for Posting ISPS Member Poems on Website

ISPS members may submit one poem/and or one haiga for posting on our website (illinoispoets.org). Poets whose last initial is E - H may submit from September 1 - 7, and poets whose last initial is I - M may submit from October 1 - 7. For submission guidelines, please go to "Submitting Poems" (illinoispoets.org/submitting.htm) in our site.

If you have bio updates to share, send to oasis@alharris.com.

For possible member news or Welcome New Member (*brief bio, photo and two short poems*), send to ISPS newsletter editor Jennifer Dotson, Jennifer@highlandparkpoetry.org (be sure to include "ISPS News" in the subject line of your email.

The ISPS website is at: illinoispoets.org

Chapter Contacts

While Covid-19 gathering restrictions are in flux statewide, please contact the chapter facilitator for more info on possible meetings online and how to access them.

All ISPS members are welcome at any monthly meeting (space permitting) after first contacting the facilitator.

Southern Chapter (Carbondale)

Contact Kathy Cotton, facilitator
kacotton7@frontier.com

Central Chapter (Champaign)

Jim O'Brien, facilitator
journaljim@gmail.com

West Suburban Chapter (Darien)

Contact Caroline Johnson, facilitator
twinkscat@aol.com

Haiku Chapter

Contact Tom Chockley, co-facilitator
tomzhaiku@outlook.com

Southwest Suburban Chapter (Lisle)

For the Zoom link, contact
Wilda Morris
wem@americtech.net

North Suburban Chapter (Northbrook)

Contact
Mary Beth Bretzlauf, facilitator
mbbretzlauf@comcast.net

North Central Chapter (Pontiac)

Contact
Kathleen Murphy, facilitator
kathleenzmurphy@mail.com